

Villa Elisabeth

Profile

A protected architectural monument, the Villa Elisabeth makes an impression with both its grandeur and its historical charm. Through the spacious Foyer and up the wide steps with wrought-iron railings, the visitors are led to the Main Hall. Ornately decorated stucco columns and arches support the gallery, while the characteristic herringbone parquet flooring, half-height wooden panels, and heavy double-leaf wooden doors emphasize the historic charm of this carefully restored event hall. Outside, the also listed Church Park—a green gem in the heart of Berlin—invites visitors to linger.

As an independent and open space, the Villa Elisabeth offers a place for a diverse, curated cultural program. The Villa focuses principally on Contemporary Composition and Early Music, experimental and interdisciplinary formats, but also classical Chamber Music concerts, recitals and vocals with smaller instrumentation, modern Music-, Speech-, and Dance-theater, as well as experimental projects of emerging artists.

History of the Villa Elisabeth

The Villa Elisabeth was inaugurated as the parish hall for the neighboring St. Elisabeth Church in 1907, and was home to its vigorous parish life. After the destruction of the church in 1945, the Villa Elisabeth served additionally as the place of worship and religious services, until joining with the Elisabeth Parish in 1998. In 2003, the Kulturbüro SOPHIEN was established, now renamed Kultur Büro Elisabeth, in order to use the St. Elisabeth Church together with the Villa Elisabeth as a cultural venue oriented towards a broader public.

Rooms and Capacity

Main Hall on the first floor (305 m²), Gallery on the second floor (171 m²), a side room connected to the Main Hall with a separate staircase. Foyer on the ground floor (141 m²), Studio 1 and 2 (132 m², acoustically separable by partition) and Studio 3 (53 m²), main staircase, one restroom with handicap access on the ground floor, ladies' room on the first floor, men's room on the second floor. An elevator to the upper floors for accessibility is currently in planning. Maximum capacity: 400 persons standing, 300 in seated rows, 50 seats on the Gallery, max. 200 guests for banquet seating. No parking available on the premises. Delivery zones are available

Facilities/Technical Capabilities/Catering

400 white design chairs, 50 bar stools, 50 standing tables, 39 buffet tables, 10 conference tables, 1 white reception and bar counter including lighting, 8 coat racks, 1 Steinway concert grand piano, 12 stage platforms, sound and lighting technology, projector, screen, and other equipment available upon request.

Inventory list and seating plans can be found on our homepage. Each floor has a single high-voltage connection; however, a maximum of 100 A on the 1st and 2nd upper floors.

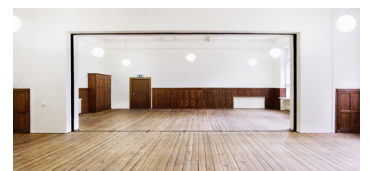
For artistic events, an in-house beverage service is available at the bar in the foyer. For rentals, we are happy to offer a customized all-inclusive package upon request.

Please note:

As of 10 pm, a law regarding neighborhood noise reduction is in effect. Between 10 pm and 8 am deliveries, as well as any driving on the premises are prohibited. Smoking is prohibited. The first floor is currently not accessible for wheelchair users and individuals with limited mobility.



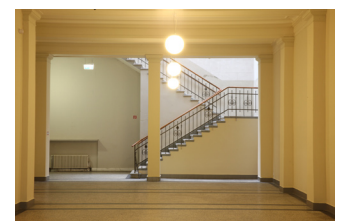
Main Hall + Gallery 1./2. floor: 305+ 171 m²



Studio 1+2: 132 m²



Studio 3: 53 m²



Foyer: 141 m²

Kultur Büro Elisabeth gGmbH

Invalidenstr

10115 Berlin

Tel 030 – 4404 36 44

info@elisabeth.berlin

www.elisabeth.berlin

Kontakt für künstlerische Veranstaltungen:

kultur@elisabeth.berlin

Kontakt für Vermietungen:

vermietung@elisabeth.berlin

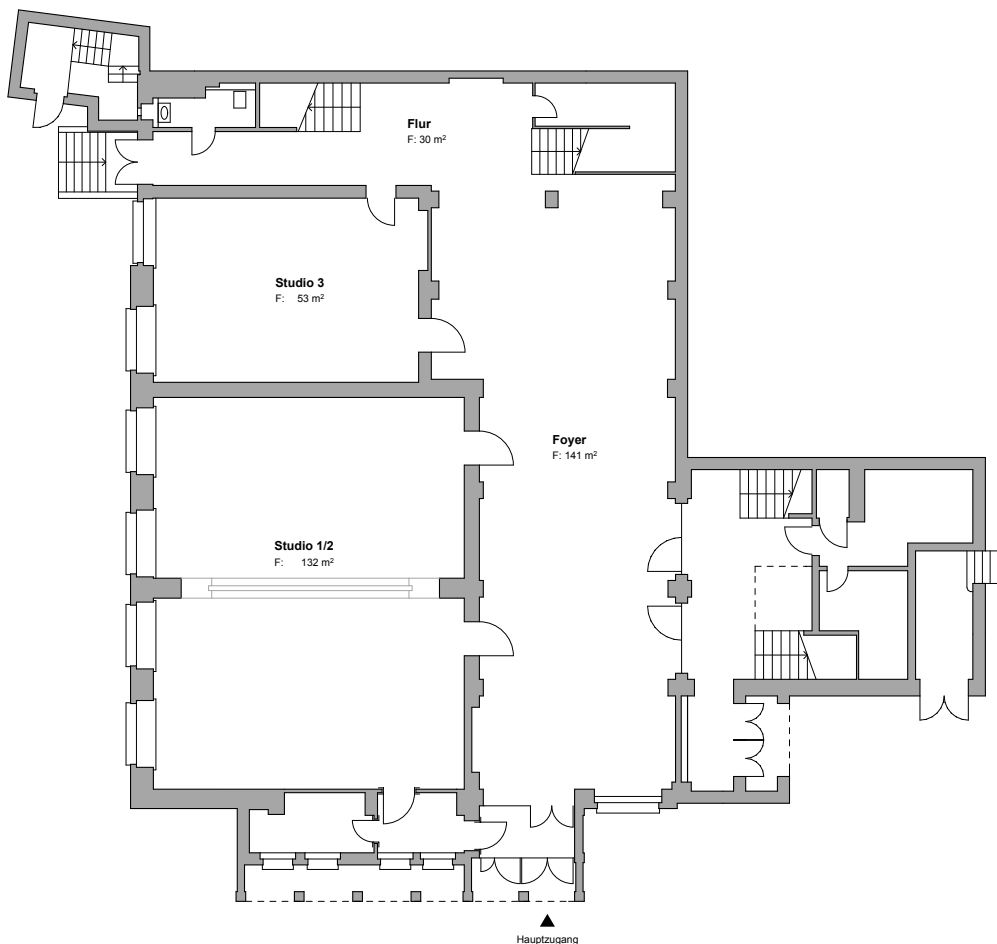


Site Plan Villa Elisabeth & St. Elisabeth Kirche

Invalidenstr. 3
10115 Berlin

Connection:

U8 Rosenthaler Platz
S1/2/25/26 Nordbahnhof
Tram M8/12 Brunnen/
Invalidenstr.
No parking facilities on the
premises.
Delivery zones are available.
Access via Elisabethkirchstraße.



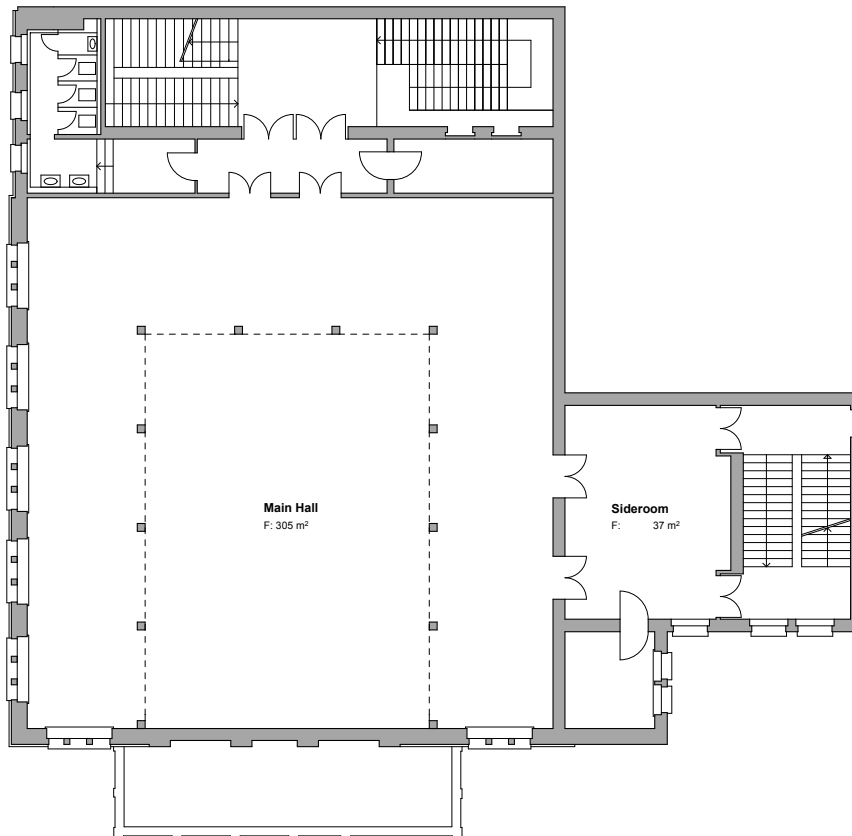
Floor plan Villa Elisabeth Ground/First Floor

Size:

Foyer: 141 m²
Studio 1+2: 132 m²
Studio 3: 53 m²
Height ground floor: 4,83 m

Capacities:

Studio 1+2, row seating: 90
people or two circles of 50
people each
U-shape seating:
approximately 35 people
Parliamentary seating: 50
people
Studio 3 (e.g., cloakroom/
catering area/storage room/
rehearsal room): row seating
for 48 people



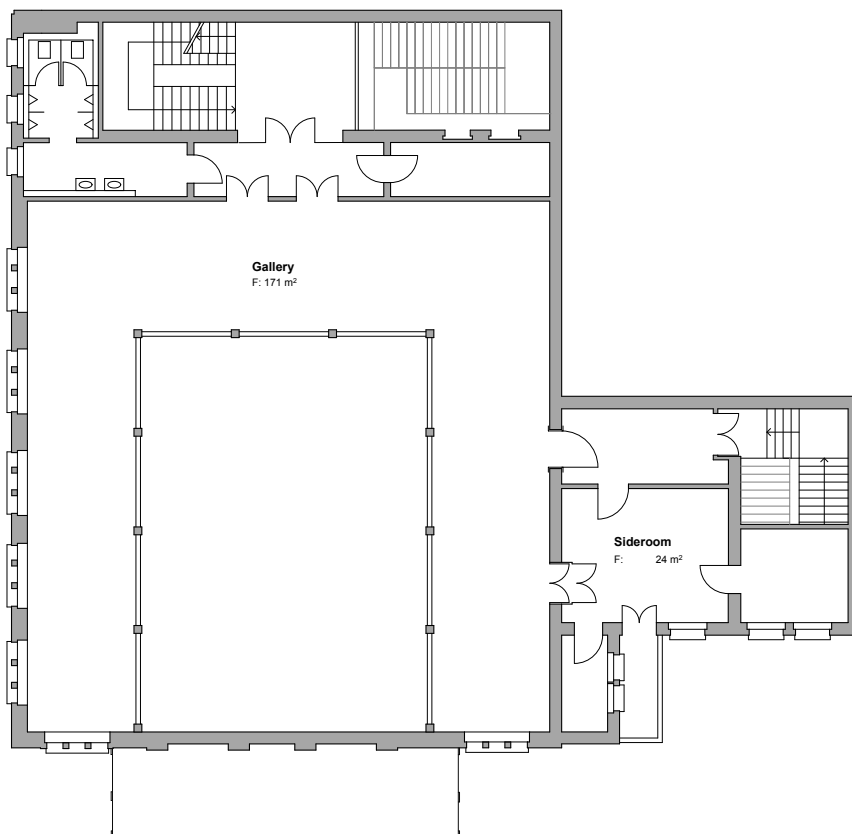
Floor Plan Villa Elisabeth First Floor

Size:

Saal: 305 qm/Height: 8,27 m
under the Gallery: 3,18 m
Sideroom: 37 qm/Height: 3,17 m

Capacity:

Row seating: 300 people
Parliamentary seating: 150 people
banquet seating: 150 people
standing: max. 400 people



Floor Plan Villa Elisabeth Second Floor

Size:

Gallery:
171 qm / Height: 3,95 m
Sideroom:
24 m² / Höhe: 3,40 m

Capacity:

Row seating: 50 people = 1 row
of chairs along the railing, plus
standing room.
A second row is possible but
with limited visibility –
alternatively, standing room

**Further information e.g.
about eletricity, seating etc. :**
www.elisabeth.berlin/download

St. Elisabeth-Kirche

Profile

St. Elisabeth is a venue where history remains palpable. It offers an open space for a diverse range of arts and artists, revealing itself as a place of artistic development, improvisation, concentration, and dialogue between culture and church.

A focal point is the performance of both classical and contemporary music, as well as modern music, spoken word, dance theater, and exhibitions of current art. Especially notable are experimental projects that combine various genres and forms of expression. The outdoor area features the historic church park—a green gem in Berlin-Mitte—inviting visitors to linger.

History of the Venue

In 1835, the Rosenthaler Vorstadt received its own place of worship, built in the "antique style" by Karl Friedrich Schinkel at the behest of King Friedrich Wilhelm III (1770–1840), aimed at "moral elevation of the conditions." The church was renovated in 1935 for its centenary but was completely destroyed by fire in 1945.

After remaining in ruins for nearly 50 years, St. Elisabeth was secured in 1991 and restored since 1999 with funds from the German Foundation for Monument Protection, the State Monument Office, the Urban Monument Protection Program, and private donations.

Facilities & Capacities

The church interior covers 315 m², with sacristies on each side of the apse (20 and 29 m²), a foyer of 30 m² with two restrooms, an organ loft (for technical equipment/staff only), a wheelchair ramp on the right side, no heating but external heating options are available. Additional restrooms and rooms are located in the adjacent villa (e.g., artist dressing rooms or catering support).

Maximum capacity is 350 seated or 400 standing guests; banquet seating for approximately 200 people. There are no parking facilities on-site, but delivery zones are available.

Facilities / Technical Equipment / Catering

Multiple three-phase power connections (16+32 A), maximum 100 A. Basic lighting and stage lighting (standard equipment plus event technology and inventory from Villa Elisabeth depending on availability). An inventory list and seating plans are available on our website. For artistic events, an in-house beverage service is available at the bar in the villa foyer or outside the church. For rentals, we are happy to offer a customized all-inclusive package upon request.

Additional Notes

Loud noise must comply with legal noise regulations from 10 PM onwards. Between 10 PM and 8 AM, driving and delivery are prohibited across the entire site. Smoking is not permitted in any indoor areas.



Exterior view with Villa Elisabeth



view direction towards the apse, EG: 315 m²



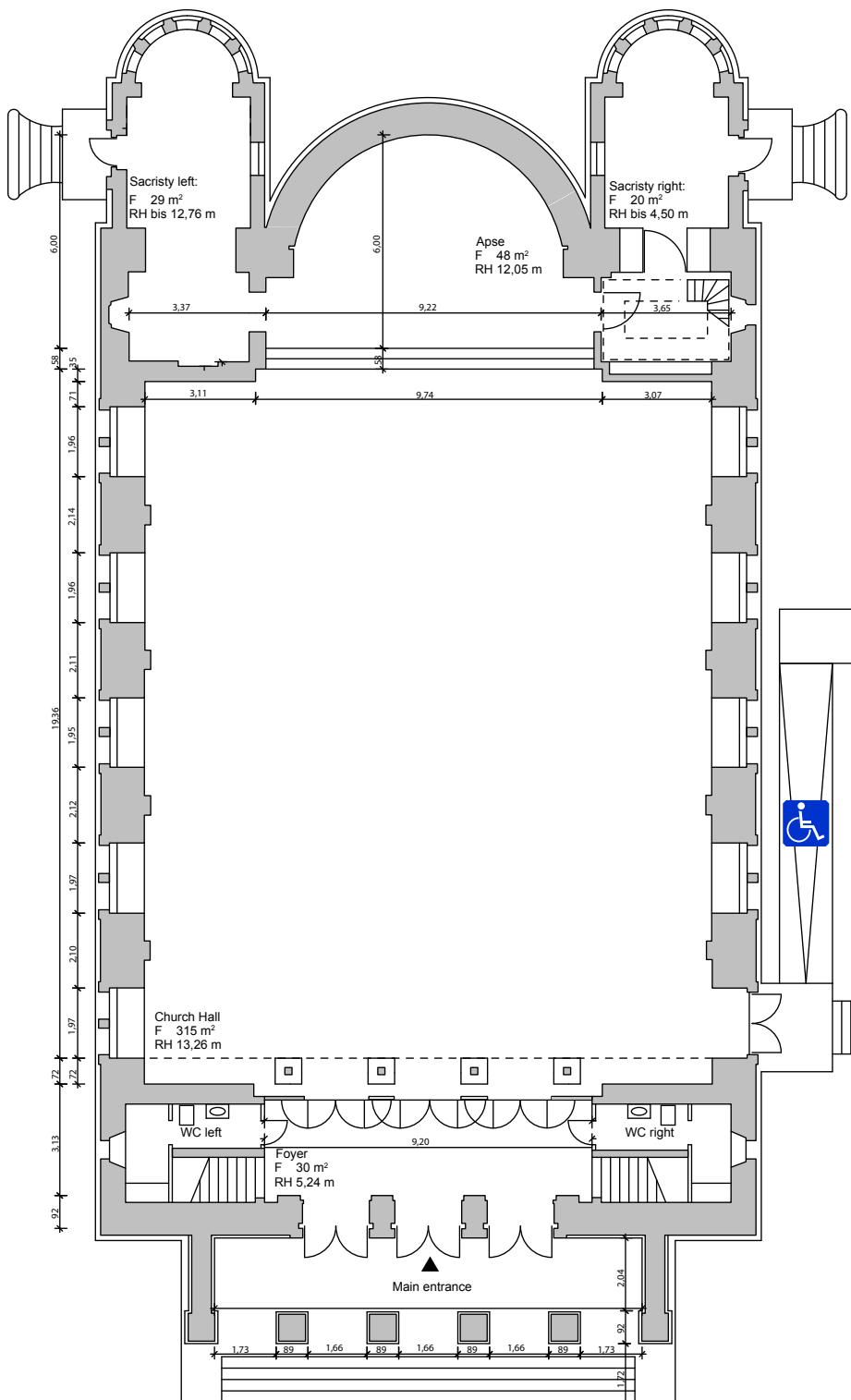
view direction towards the entrance



Dinner in St. Elisabeth

Kultur Büro Elisabeth gGmbH
Invalidenstr. 4a
10115 Berlin
Tel 030 – 4404 36 44
info@elisabeth.berlin
www.elisabeth.berlin

Contact for artistic events:
kultur@elisabeth.berlin
Contact for rentals:
vermietung@elisabeth.berlin



Floor Plan
St. Elisabeth Church

Size:

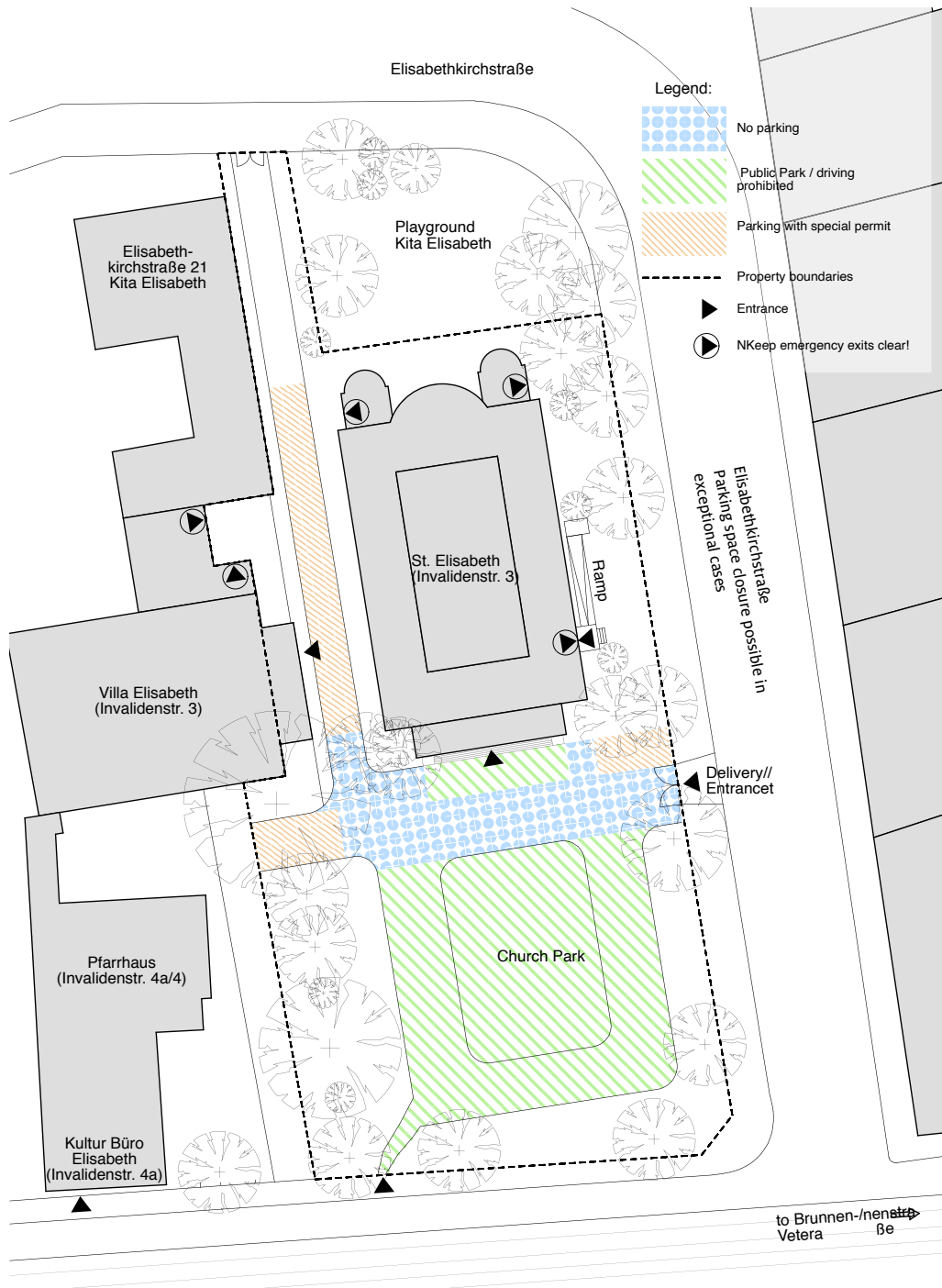
Church Hall: 315 m²
 Apse: 48 m²
 Foyer: 30 m²
 Sacristy left: 29 m²
 Sacristy right: 20 m²
 Church gallery: ca. 14 m²
 Height: 13,46 m

Kapazität:

Row seating: 398 Pax
 Banquet seating: 200 Pax
 Standing: 400 Pax

Further information e.g.
 about electricity, seating
 etc.:

[www.elisabeth.berlin/
 download](http://www.elisabeth.berlin/download)



Exterior areas and park of the St. Elisabeth Church and the Villa Elisabeth

Invalidenstr. 3
10115 Berlin

Connection:

U8 Rosenthaler Platz,
S1/2/25/26 Nordbahnhof,
Tram M8/M12 Brunnen/
Invalidenstr.
No parking facilities on the premises.

Delivery zones are available.

Access via
Elisabethkirchstraße.

Kultur Büro Elisabeth gGmbH

Invalidenstr. 4a

10115 Berlin

Tel 030 - 4404 36 44

info@elisabeth.berlin

www.elisabeth.berlin

Contact for artistic events:

kultur@elisabeth.berlin

Contact for rentals:

vermietung@elisabeth.berlin