

# Villa Elisabeth

## Profile

A protected architectural monument, the Villa Elisabeth makes an impression with both its grandeur and its historical charm. Through the spacious Foyer and up the wide steps with wrought iron railings, the visitor arrives in the Main Hall, replete with stucco-ornamented columns and archways that support the overhanging Gallery, as well as hardwood floors, wainscoting, and heavy wooden double-doors.

As an independent and open space, the Villa Elisabeth offers a place for a diverse, curated cultural program. The Villa focuses principally on Contemporary Composition and Early Music, experimental and interdisciplinary formats, but also classical Chamber Music concerts, recitals and vocals with smaller instrumentation, modern Music-, Speech-, and Dance-Theater, as well as experimental projects of emerging artists.

## History of the Villa Elisabeth

The Villa Elisabeth was inaugurated as the parish hall for the neighboring St. Elisabeth Church in 1907, and was home to its vigorous parish life. After the destruction of the church in 1945, the Villa Elisabeth served additionally as the place of worship and religious services, until joining with the Elisabeth Parish in 1998. In 2003, the Kulturbüro SOPHIEN was established, now renamed Kultur Büro Elisabeth, in order to use the St. Elisabeth Church together with the Villa Elisabeth as a cultural venue oriented towards a broader public.

## Location & Directions

The Villa is located at InvalidensträÙe 3, 10115 Berlin-Mitte in the Rosenthal neighborhood near Weinberg Park (Weinbergspark) and Brunnenstraße. Directly adjacent to the St. Elisabeth Church, with access through the church yard.

## Rooms and Capacity

Main Hall on the first floor (300 m²), Gallery on the second floor (171 m²), each with an adjoining room offering access to the the Main Hall and Gallery respectively, and containing separate staircases. Foyer on the ground floor (141 m²), Studio 1 (141 m²), Studio 2 (132 m²) and Studio 3 (52 m²), main staircase, one restroom with handicap access on the ground floor, ladies' room on the first floor, men's room on the second floor.

Maximum capacity: 400 persons standing, 200 in seated rows, 50 seats on the Gallery

## Facilities/Technical Capabilities/Catering

290 designer chairs, 50 wooden chairs, 30 tables, 3 white, half-round bars including lighting, 3 reception counters, 6 coat racks, 1 concert grand piano Boston Steinway GP-193, 12 stage platforms, sound and lighting equipment, video projector, projection screen, and further equipment upon request. A detailed inventory, as well as seating charts can be found on our homepage. For artistic events, a house bar in the foyer of the Villa or in front of the Church is available. In the case of rentals, we gladly offer a custom bid upon request. There is, however, no obligation to use our catering or technical partners.

## Please note:

As of 10 pm, a law regarding neighborhood noise reduction is in effect. Between 10 pm and 8 am deliveries, as well as any driving on the premises are prohibited. Smoking is prohibited. Candles are permitted only in fireproof vessels containing sand or water.



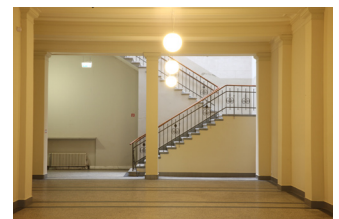
Saal mit Galerie 1./2. OG: 300 + 100 m²



Studio 1 im EG: 130 m²



Studio 3 im EG: 55 m²



Foyer: 141 m²

## Kultur Büro Elisabeth gGmbH

Invalidenstr. 4a

10115 Berlin

Tel 030 – 4404 36 44

Fax 030 – 4404 23 62

kultur@elisabeth.berlin

www.elisabeth.berlin

## Kontakt für künstlerische Veranstaltungen:

isabel.schubert@elisabeth.  
berlin

## Kontakt für Vermietungen:

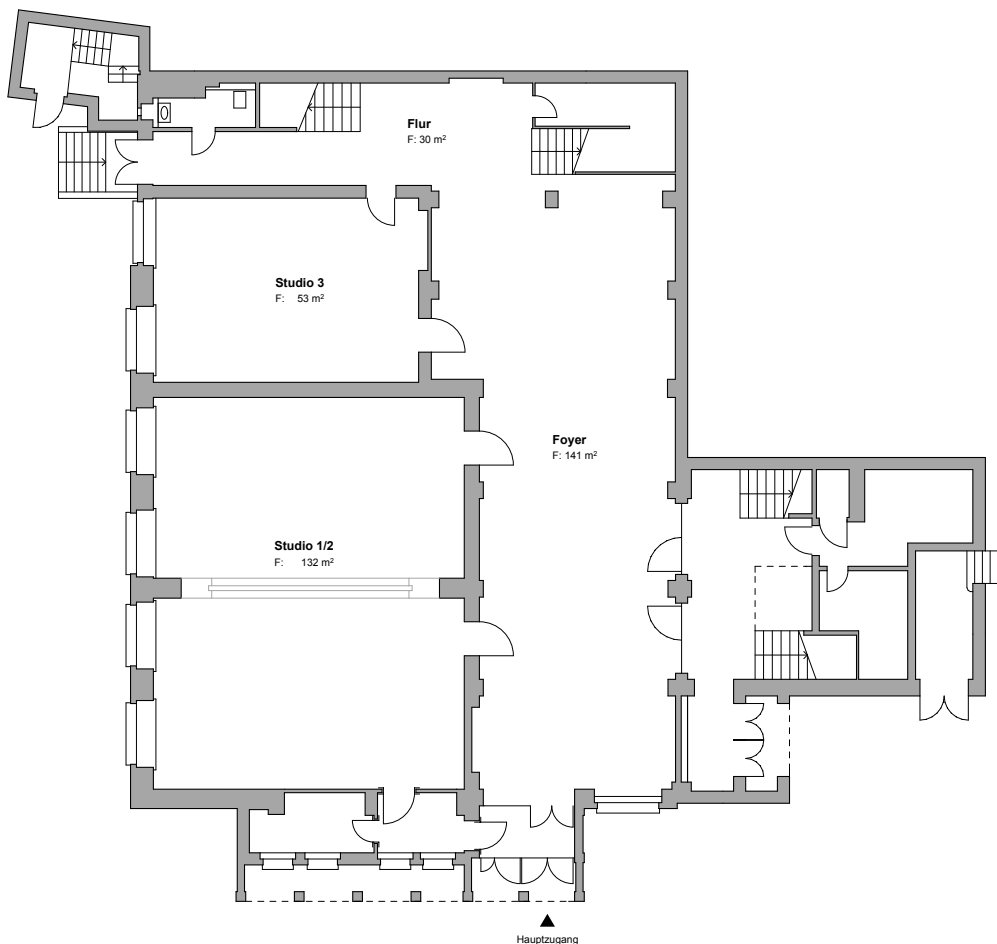
leonie.schirra@elisabeth.berlin



## Site Plan Villa Elisabeth & St. Elisabeth Kirche

The Villa is located at Invalidenstraße 3, 10115 Berlin-Mitte in the Rosenthal neighborhood near Weinberg Park (Weinbergspark) and Brunnenstraße. Directly adjacent to the St. Elisabeth Church, with access through the church yard.

Arrival by public transit with the U-Bahn Line 8 to Rosenthaler Platz, the S-Bahn Lines 1, 2, and 25 to Nordbahnhof, or Tram Lines M8 or 12 to Brunnenstr./Invalidenstr. No parking is available on the premises.



## Floor plan Villa Elisabeth Ground/First Floor

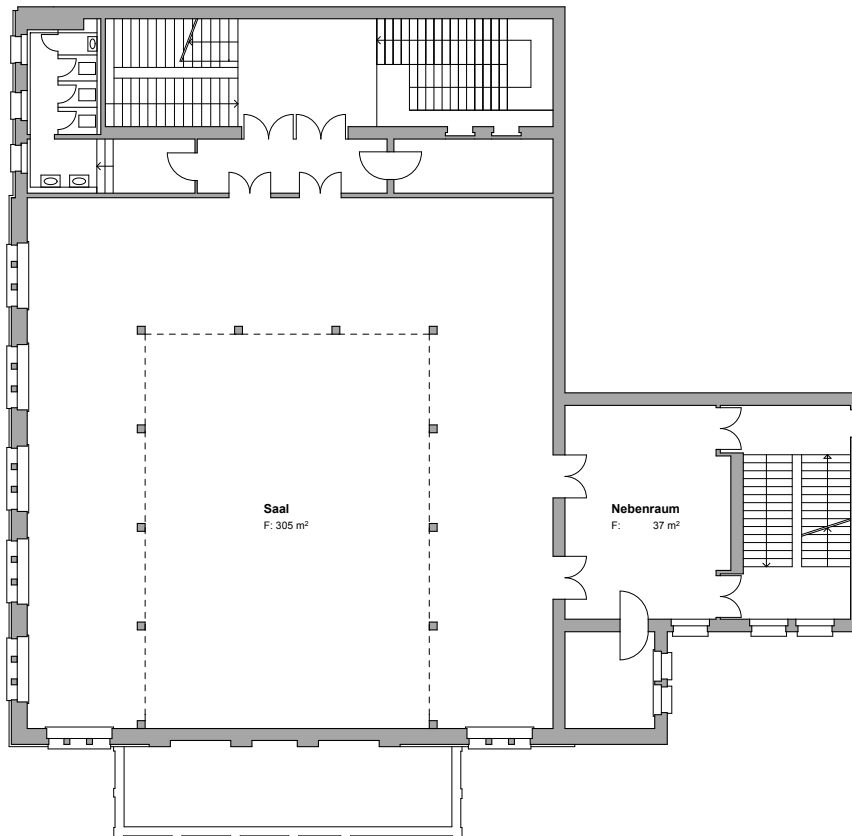
### Size:

Foyer: 141 qm

Studio 1: 132 qm

Studio 3: 53 qm

Height: 4,83 m



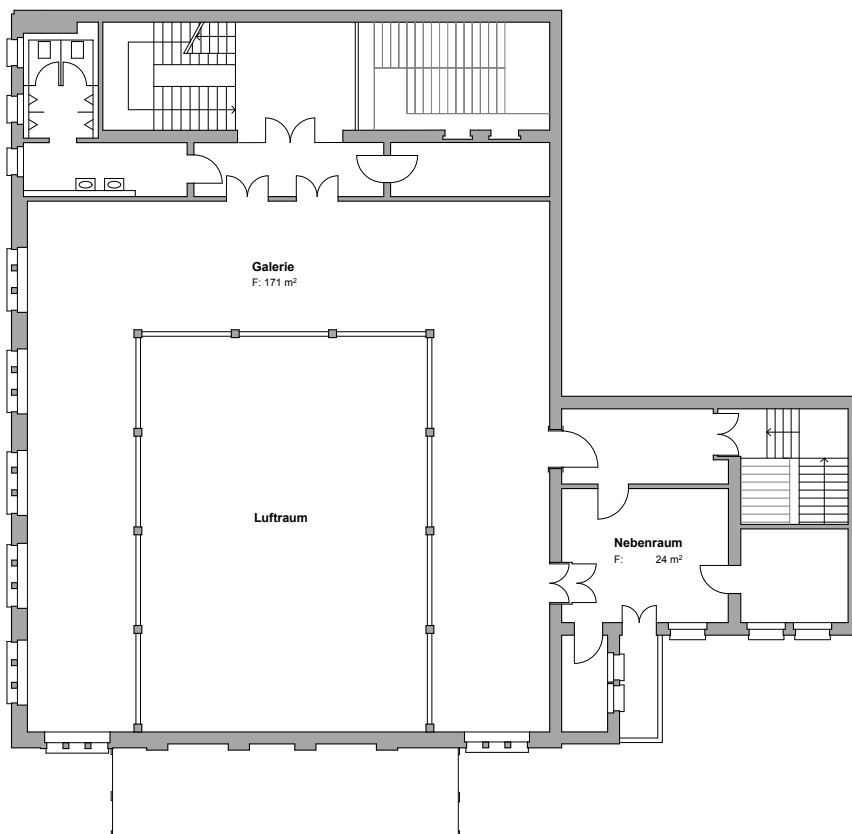
## Floor Plan Villa Elisabeth First Floor /Second Floor

### Size:

Saal: 305 qm/Height: 8,27 m  
under the Gallery: 3,18 m  
Sideroom: 37 qm/Height: 3,17 m

### Capacity:

400 persons standing  
250 persons in seated rows



## Grundriss Villa Elisabeth Second Floor /Third Floor

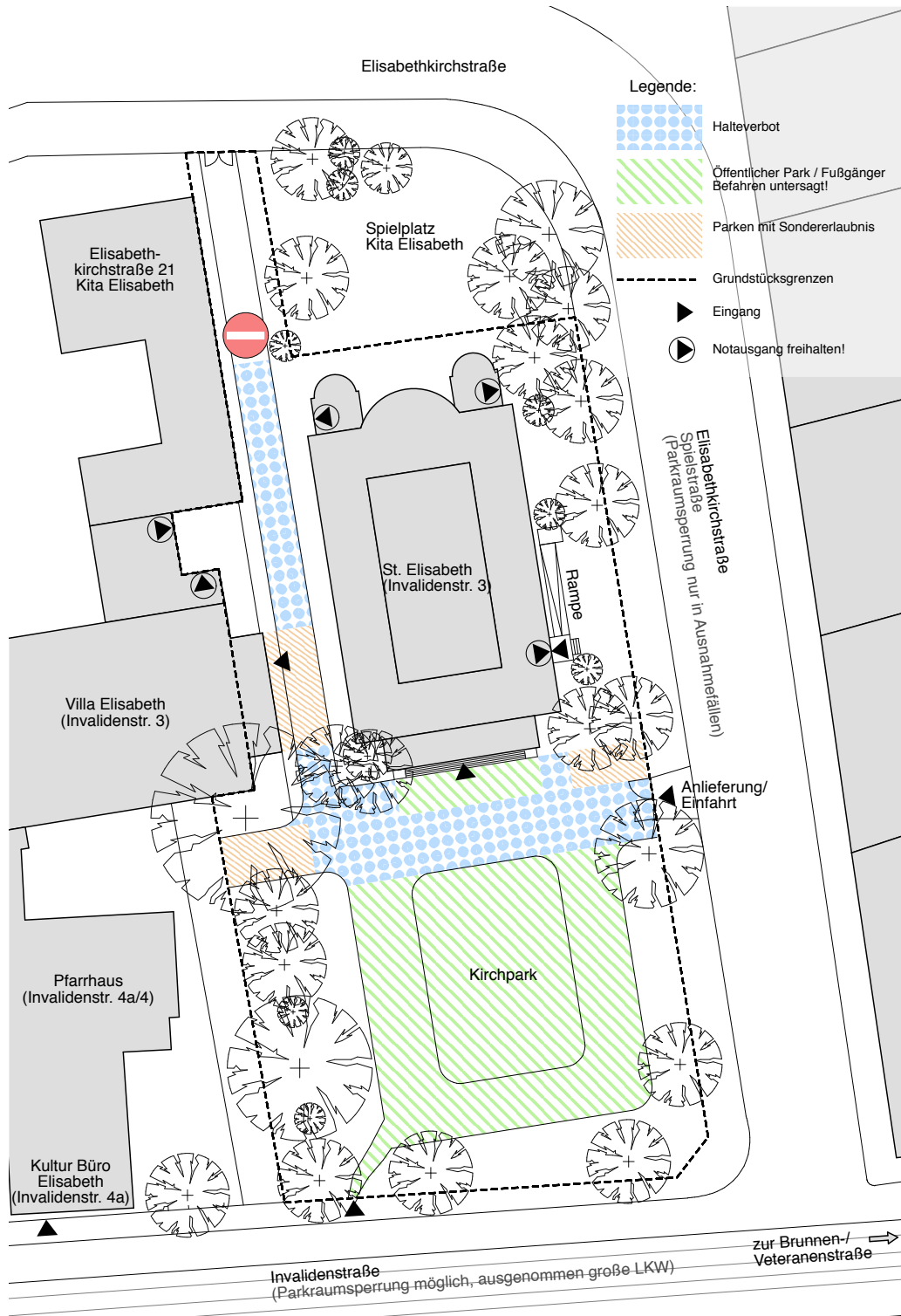
### Size:

Gallery:  
171 qm / Height: 3,95 m  
Sideroom:  
24 m² / Höhe: 3,40 m

### Capacity:

50 persons in one seated row  
and standing room

Further information e.g.  
about eletricity, seating etc. :  
[www.elisabeth.berlin/download](http://www.elisabeth.berlin/download)



Outside and Park  
St. Elisabeth-Kirche &  
Villa Elisabeth